

PHILIPPINE NATIONAL PHILOSOPHICAL RESEARCH SOCIETY

25 Capitol Homesite Subd., 99 Tandang Sora Ave.
Quezon City 1116, Philippines

CONTACT US

Philippine National Philosophical Research Society (PNPRS)

URL: <http://www.pnprs.org>

Telephone: (632)-4569314

Email: pnprs2010@yahoo.com

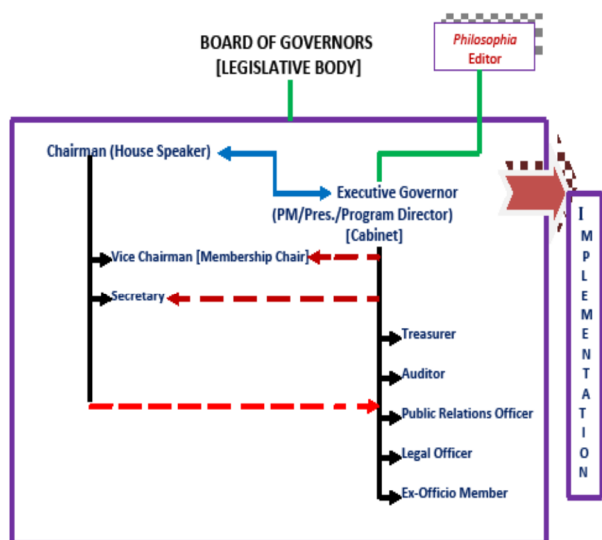
Φιλοσοφία: *Philippine International Journal of Philosophy*

URL: <http://www.ejournals.ph/index.php?journal=PIJP>

Editor: Rolando M. Gripaldo, PhD

Email: drgrrips@yahoo.com; drgrrips@gmail.com

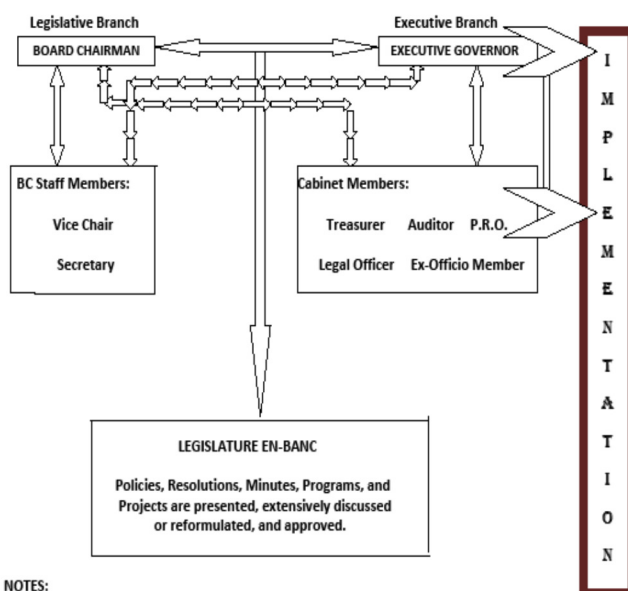
PNPRS ORGANIZATIONAL CHART



NOTES:

1. Double Arrows = represent consultations between the Board Chair and the Executive Governor for Legislative actions.
2. Single arrows = represent LINE responsibilities of officers. The Vice Chair and the Secretary are STAFF members directly under the Board Chair while the Cabinet are STAFF members directly under the Executive Governor.
3. Broken arrows = represent advisory consultations by the Chair with the Cabinet Staff or by the Executive Governor with the Chair Staff.
4. No staff member from either the Chair or the Executive Governor can present his or her plans/projects directly to the Board *without prior clearance or approval* of the respective legislative and/or executive heads for presentation in a formal Board meeting or, in cases of urgency, for a direct presentation VIA EMAIL to the Board for legislative action.

PNPRS COMMUNICATIONS FLOW CHART



NOTES:

1. Double arrows = communications pertaining to each line function—especially with respect to plans and projects, and to the basic line functions as stipulated in the By-Laws—flow directly from the Executive Governor (EO) to the members of the Cabinet and vice versa; the same holds true between the Board Chairman (BC) and the Staff members and vice versa.
2. Broken double arrows = direct consultations, inquiries, requests for information or similar matters may flow from the EO to the BC staff and vice versa; the same likewise holds from the BC to the Cabinet staff and vice versa.
3. The double arrow that connects the EO and the BC pertains to what items and related matters will be presented for legislative action and decision by the Legislative Board en banc.
4. The Executive Governor (EO) can directly, or through the recommendation of the Board Officer concerned, designate an Assistant Officer—with the concurrence of the Board Chairman (BC)—whenever the need arises. The Assistant Officer may be requested by the EO, with the concurrence of the BC, to attend the Legislative Meeting to shed light on some activities within his/her area of responsibility.

